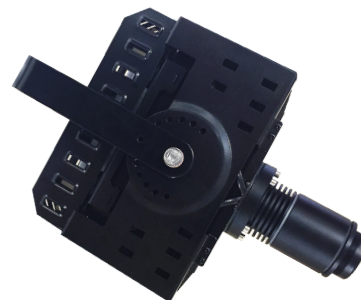


ECO Spot C60PCE LED Gobo Projector

Weather- and Dustproof Projector for Rough Environments

- **Passive Cooling** - No moving parts such as fans or motors.
- Ideal for dusty and wet industrial environments.
- For very bright environments, extra large projection sizes and distances.
- Interchangeable Projection Lenses, for wide projection distance/size range.
- Takes std. **D-size gobos**, up to Full Color.



SPECIFICATIONS:

Order Code: ES-60PCE
Power Supply: 95V-265V, 50-60GHz, 75W

Other Build Options: ES-C60E with active cooling and gobo rotator
Passive Cooled models: 90W, 150W, 300W

Lamp Type: LED 60W
LED Power Range: Adjustable 60 to 70W
Rated Life: 30,000h depending on power setting
Color Temperature: 6,000k +/-500k
Luminous Flux: 4,000lm (effective flux 2,400lm)

Projection Lenses: Narrow: f=140mm/10°, Semi-Narrow: f=100mm/15°
Medium: f=70mm/25°, Ultra-Wide: f=28mm/45°
Gobo Dimensions: D-Size (OD53mm, ID32mm), max. thickness: 4mm
Gobo Types: Glass and Metal, **NO** film material

PROJECTION RANGE

Bright environment: - up to 50ft
Dim environment: - up to 90ft
Dark environment: - up to 180ft (or more in very dark conditions)

SAFETY STANDARDS

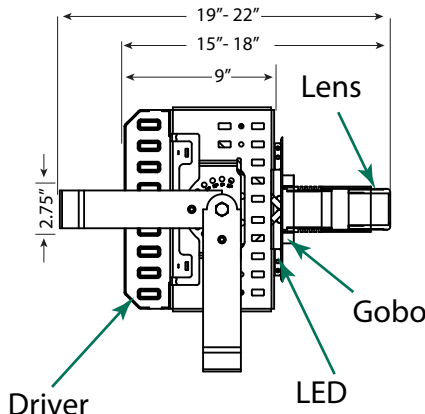
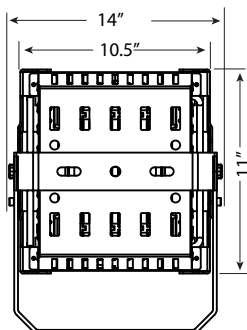
Projector: IP62 (self rated), UL in preparation

Driver: IP65, UL8750(type"HL"), CSA C22.2 No. 250.0-08, ENEC, TUV EN61347-1, EN61347-2-13, J61347-1, J61347-2-13 approved; design refer to UL60950-1, TUV EN60950-1

ECO Spot C60PCE LED Gobo Projector

Dimensions:

Projector Body: 11 x 10.5 x 9in
Weight: 14lbs

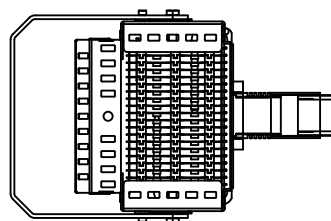


Total length including the projection lens:

- Narrow: f=140mm/10°: 18in
- Semi-Narrow: f=100mm/15°: 17in
- Medium: f=70mm/20°: 15in
- Ultra-Wide: f=28mm/45°: 16.5in

Total length including the lens & yoke:

- Narrow: f=140mm/10°: 22in
- Semi-Narrow: f=100mm/15°: 21in
- Medium: f=70mm/20°: 19in
- Ultra-Wide: f=28mm/45°: 21.5in



ECO Spot™ Photometrics						ECO Spot is a Trademark of Globus New Media LLC dba Gobosource																			
Model Gobo Size	Color Temp.	Lens	Beam Mult.	Effective lm	CD	Value	PROJECTION DISTANCE IN FEET (ft)																		
							3	6	9	12	15	20	24	30	36	42	64	88	112	136	200	300			
ES-C60 ES-C60E ES-C60+ ES-C60PCE	6000k +/- 500k	140mm (10°)	0.18	2381	93,600	Size (ft)					1.6	2.2	2.7	3.6	4.3	5.4	6.5	7.6	11.5	15.8	20.2	24.5	36.0		
		Brightn.(fc)									1156	650	416	234	163	104	72	53	23	12	7	5	2		
E-Size ID=25mm		100mm (15°)	0.26	3362	63,360	Size (ft)		1.6	2.3	3.1	3.9	5.2	6.2	7.8	9.4	10.9	16.6	22.9	29.1	35.4					
		Brightn.(fc)									1760	782	440	282	158	110	70	49	36	15	8	5	3		
		70mm (20°)	0.35	3739	38,880	Size (ft)		2.1	3.2	4.2	5.3	7.0	8.4	11	13	15	22	31	39						
		Brightn.(fc)									1080	480	270	173	97	68	43	30	22	9	5	3			
		50mm (25°)	0.45	4807	30,240	Size (ft)		2.7	4.1	5.4	6.8	9.0	11	14	16	19	29	40	50						
		Brightn.(fc)									840	373	210	134	76	53	34	23	17	7	4	2			
		28mm (45°)	0.88	5952	9,792	Size (ft)		5.3	7.9	10.6	13.2	17.6	21.1	26.4	31.7	37.0	56.3								
		Brightn.(fc)									272	121	68	44	24	17	11	8	6	2					

ECO Spot is a Trademark of Globus New Media LLC dba Gobosource
Copyright ©2018 GoboSource™

How to Read the Illumination Values

Foot Candles (ft) For a quick overview, the illumination values in the tables are color coded. There are many factors that determine the visibility of a projection, such as ambient light, color and reflectiveness of the projection surface, competing light, gobo colors, projector color temperature, and other factors. Therefore our recommendations should only be used as guidelines and we cannot guarantee a successful application. If you are unsure, please call us to discuss.

Projection Size Calculation For the resulting Projection Size at any given Distance, Multiply the number in the "Beam Mult." column with your Projection Distance. **Projection Size = Distance x Beam Mult.**
For the Distance needed to achieve a desired Projection Size, Divide the Projection size by the Beam Multiplier. **Distance = Projection Size / Beam Mult.**

300+ Extreme brightness for extremely bright environments, i.e. bright areas, additionally flooded with daylight, such as Lobby-, Retail-, Trade Show-, Environment. Outdoors (shady, no direct sunlight).

150-300 Very high brightness for very bright environments, such as light flooded Office-, Lobby-, Retail-, Trade Show-, Environment. Color gobos project in vibrant colors. Outdoors well visible at night with vibrant colors.

45-150 The most common brightness bracket for bright environments, such as Office, Lobby, Retail, Tradeshow. Outdoors extremely bright at night. Color gobos project well.

15-45 Sufficient brightness for environments, such as Bars, Clubs, and intimate Restaurants, Theaters, and dimmed Conference rooms. Outdoors well visible at night. Color gobos should preferably be used with lighter colors and the projection surface should be light and somewhat reflective.

15-2 Only advisable for dark environments and subtle projection of light colored artwork, preferably on light, reflective projection surface. If all conditions are met, the max. listed image distance/size can be doubled in most cases.

Metric Conversions: For Meters multiply feet by .3048. For Lux multiply footcandles by 10.76

PACKAGE CONTENTS

Power Cord • Test Gobo • Spare Gobo Retaining Ring • Integrated Gobo Mounts • User Manual

Questions? Call us!
1-831-431-8800

www.gobosource.com